



SLO1764 V2
17" TFT LCD, LED Backlight 800nits,SXGA(1280x1024)

17" TFT LCD panel, built-in 800 nits high bright for sunlight readable LCD display, high transmittance color filter, high transmission polarizing plates, Low Power Consumption, suitable for kiosk, advertising, POS, marline, transportation, gaming, studio display, gas pump.

Key Features

- Sunlight Readable
- LED Backlight
- SXGA(1280x1024) High Definition
- High Shock & Vibration Resistance
- Low Power Consumption
- High Uniformity
- Low EMI Noise
- Wide Dimming
- Life Expectancy



Specifications

V1

| | |
|--------------------------------------|--|
| Model No. | SLO1764 V2 |
| Description | 17" TFT LCD, LED Backlight 800nits,SXGA(1280x1024) |
| Display Area (mm) | 337.9(H) x 270.3(V) mm |
| Brightness | 800 cd/m ² |
| Resolution | 1280x1024 (SXGA) |
| Contrast Ratio | 1000 : 1 |
| Pixel Pitch (mm) | 0.264(H) x 0.264(V) |
| Pixel Pre Inch (PPI) | 96 |
| Viewing Angle | 170°(H), 160°(V) |
| Color Saturation (NTSC) | 83 |
| Display Colors | 16.7M |
| Response Time (Typical) | 5ms |
| Sync | LVDS |
| Operating Temperature | 0°C ~ 50°C |
| Storage Temperature | -20°C ~ 60°C |
| Power Consumption | 18W |
| Dimensions (mm) | 389.7x298.3x36.2mm |
| Weight (Net) | 2.8kg |
| LED Driving Board | LID17A |
| Control Board (Optional) | <input type="checkbox"/> AD2662GDVAR |
| <input type="checkbox"/> AD2662GDVAR | VGA+DVI (Optional S-Video/ Component / Audio) |
| F / R Control Button | <input type="checkbox"/> 4 Key |
| <input type="checkbox"/> 4 Key | Power Switch, Menu, Select (+,-), |
| OSD Menu | Brightness, Contrast, H/V Position, Color, Phase, Clock... |
| Optional | <input type="checkbox"/> AOT <input type="checkbox"/> Touch Screen |

*Specifications are subject to change without notice.
 All brands or product names are trademarks or registered trademarks of their respective companies.*

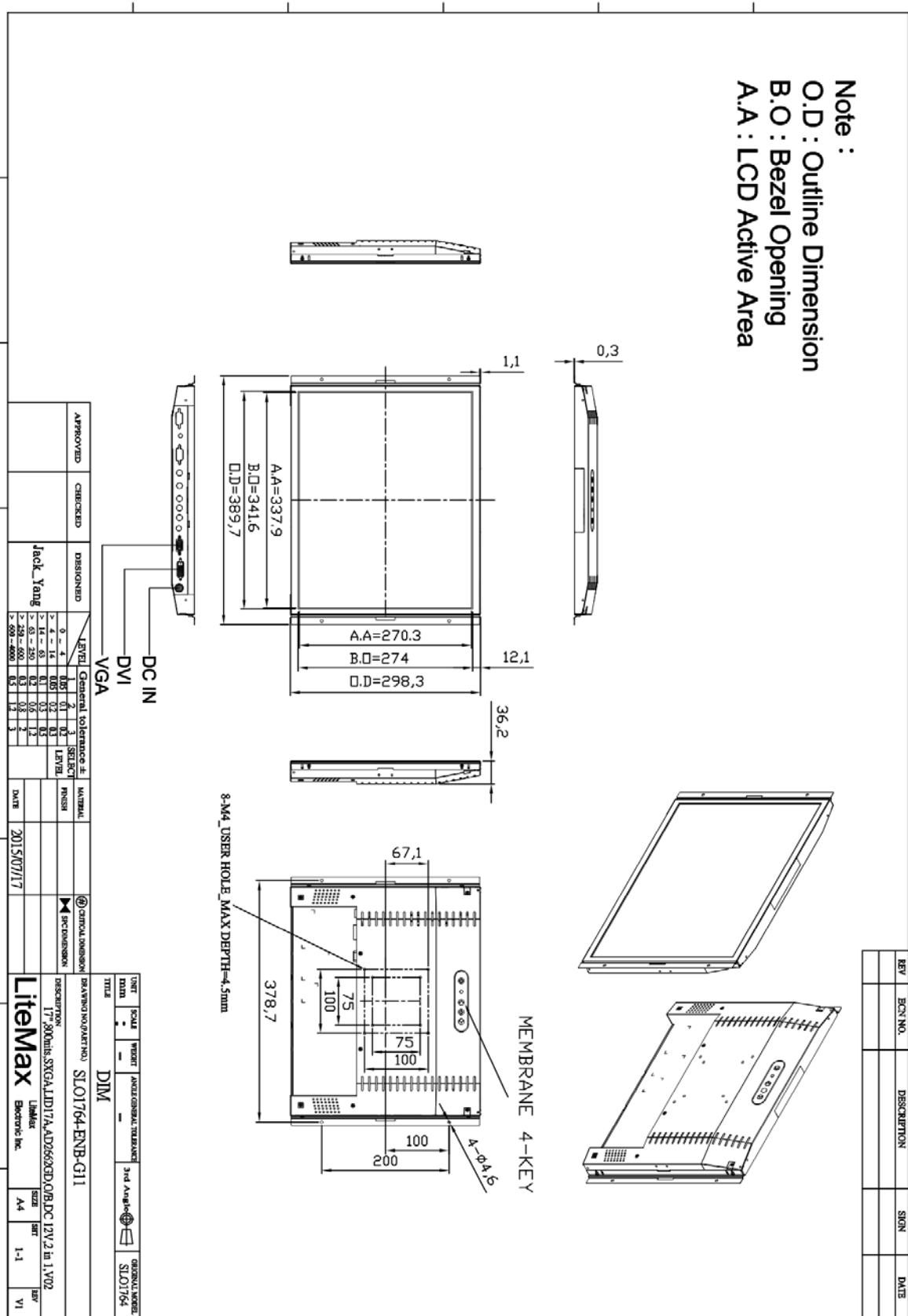
SLO= Panel+LED Driving Board+Control Board



Mechanical Drawing

Outline Dimensions

Unit:mm





Ordering Information

| Part Number | Description |
|-----------------|--|
| SLO1764-ENB-G11 | 17",800nits,SXGA,LID17A,AD262GD,O/B,DC12V,2 in 1,V02 |

Optional Accessories

| Part Number | Description |
|---------------------|--------------------------------------|
| 840612051100 | ADAPTER.12V.5A.60W.EA1050A,P |
| 810618301010 | CABLE.POWER.AC.1830mm USA type |
| 810618301090 | CABLE,POWER,AC,1830mm Europe type |
| 810618301050 | CABLE.POWER.AC.1830mm UK type |
| 810618301170 | CABLE.POWER,AC,1830mm Australia type |
| 810618301031 | CABLE.POWER.AC.1830mm Japan type |