



## SLO1568

### 15" Open Frame LCD Display, LED Backlight 2000nits,XGA

SLO1568 TFT LCD monitor, built-in 2000 nits high brightness for sunlight readable display. It offers the best visibility, performance and cost effective value. The high level of brightness together with the optimal contrast ratio renders high quality images and enhances legibility. With its fast response time and LED backlight technology, the monitor brings remarkable display quality and durability for your applications. Suitable for marine, military, medical, transportation, and industrial application.

#### Key Features

- Brightness: 2000 nits
- LED Backlight
- XGA(1024x768) High Definition
- High Shock & Vibration Resistance
- Low Power Consumption
- High Uniformity
- Low EMI Noise
- Wide Dimming



### Specifications

Preliminary

<b>Model No.</b>	<b>SLO1568</b>
<b>Description</b>	15" Open Frame LCD Display, LED Backlight 2000nits,XGA(1024x768)
<b>Display Area (mm)</b>	304.13(H) x 228.1(V) mm
<b>Brightness</b>	2000 cd/m <sup>2</sup>
<b>Resolution</b>	1024x768 (XGA)
<b>Contrast Ratio</b>	1000 : 1
<b>Pixel Pitch (mm)</b>	0.297(H) x 0.297(V)
<b>Viewing Angle</b>	+80°~-80°(H), +80°~-80°(V)
<b>Display Colors</b>	16.7M
<b>Response Time (Typical)</b>	8ms
<b>Power Consumption</b>	24 W
<b>Dimensions (mm)</b>	350.5x253.5x31mm
<b>Weight (Net)</b>	1.2kg
<b>LED Driving Board</b>	LID 15A
<b>Control Board (Optional)</b>	<input type="checkbox"/> AD6038GA <input type="checkbox"/> AD6038GD <input type="checkbox"/> AD2662GDVA <input type="checkbox"/> AD2662GDVAR
<input type="checkbox"/> AD6038GA	VGA+Audio
<input type="checkbox"/> AD6038GD	VGA+DVI
<input type="checkbox"/> AD2662GDVA	VGA+CVBS+S-Video+Audio (Optional DVI / Component)
<input type="checkbox"/> AD2662GDVAR	VGA+DVI (Optional S-Video/ Component / Audio)
<b>F / R Control Button</b>	<input type="checkbox"/> 5 Key <input type="checkbox"/> 4 Key
<input type="checkbox"/> 5 Key	Power Switch, Menu, Select (+,-), Auto
<input type="checkbox"/> 4 Key	Power Switch, Menu, Select (+,-),
<b>OSD Menu</b>	Brightness, Contrast, H/V Position, Color, Phase, Clock...
<b>Optional</b>	<input type="checkbox"/> AOT <input type="checkbox"/> Touch Screen

Specifications are subject to change without notice.

All brands or product names are trademarks or registered trademarks of their respective companies.

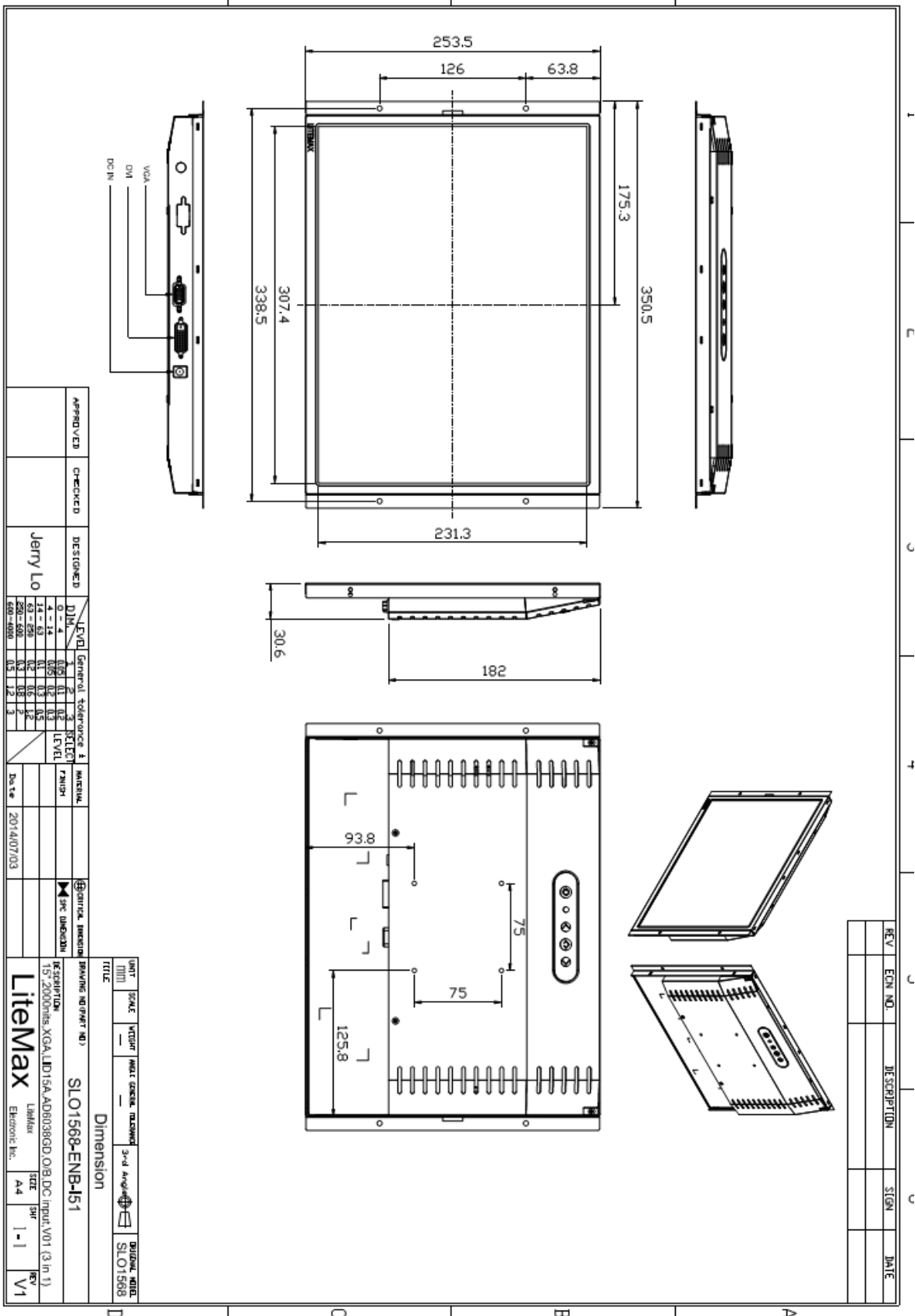
**SLO**= Panel+LED Driving Board+Control Board+Housing



# Mechanical Drawing

## Outline Dimensions

Unit:mm



APPROVED	CHECKED	DESIGNED	Jerry Lo
LEVEL		General tolerance & SELECT FINISH	
0 - 4	0.1	0.1	0.1
5 - 14	0.15	0.15	0.15
15 - 49	0.2	0.2	0.2
50 - 99	0.3	0.3	0.3
100 - 499	0.5	0.5	0.5
500 - 999	0.8	0.8	0.8
1000 - 4999	1.2	1.2	1.2
5000 - 9999	2.0	2.0	2.0

DESCRIPTION	ISSUES NO (PART NO)
15" 2000rphs XGA LID15A A000386DD OIB DC Input V01 (3 in 1)	SLOT1568-ENB451
LiteMax	LiteMax
Electronic Inc.	Electronic Inc.
DATE	2014/07/03

UNIT	SCALE	VENDOR	ASSEMBLY	PRODUCTION	3rd Angle	DRIVING INFO
mm	1:1					SLOT1568
TITLE						Dimension
SIZE	A4	REV	V1			

REV	ECN NO.	DESCRIPTION	SIGN	DATE



### Ordering Information

Part Number	Description
<b>SLO1568-ENB-I51</b>	15",2000nits,XGA,LID15A.AD6038GD,O/B,DC 12V input.V01(3 in 1)

### Optional Accessories

Part Number	Description
<b>840612051100</b>	ADAPTER.12V.5A.60W.EA1050A,P
<b>810618301010</b>	CABLE.POWER.AC.1830mm USA type
<b>810618301090</b>	CABLE,POWER,AC,1830mm Europe type
<b>810618301050</b>	CABLE.POWER.AC.1830mm UK type
<b>810618301170</b>	CABLE.POWER,AC,1830mm Australia type
<b>810618301030</b>	CABLE.POWER.AC.1830mm Japan type