



## SLO1095-E V2 10.4" TFT LCD, LED Backlight 1300nits,XGA

10.4" TFT LCD panel, built-in 1300 nits high bright for sunlight readable LCD display, high transmittance color filter, high transmission polarizing plates, Low Power Consumption, suitable for kiosk, advertising, POS, marine, transportation, gaming, studio display, gas pump.

### Key Features

- Sunlight Readable
- LED Backlight
- High Shock & Vibration Resistance
- Low Power Consumption
- Wide Operation Temperature. (-20°C ~ 70°C )
- High Uniformity (90%)
- Low EMI Noise
- Wide Dimming
- Life Expectancy (70,000hrs)

### Applications

Marine, Military,  
Medical, Transportation  
Industrial



## Specifications

V1

<b>Model No.</b>	SLO1095-E V2
<b>Description</b>	10.4" TFT LCD, LED Backlight 1300 nits, XGA
<b>Display Area (mm)</b>	210.432 (H) x 157.824(V) mm
<b>Brightness</b>	1,300 cd/m <sup>2</sup>
<b>Resolution</b>	1024 x 768 (XGA)
<b>Contrast Ratio</b>	600 : 1
<b>Pixel Pitch (mm)</b>	0.2055(H) x 0.2055(V)
<b>Viewing Angle</b>	+89°~-89°(H), +89°~-89°(V)
<b>Display Colors</b>	262,144 colors
<b>Response Time (Typical)</b>	36ms (Typical)
<b>Sync</b>	LVDS
<b>Power Consumption</b>	10W
<b>Dimensions (mm)</b>	279(W) x 204(H) x 45(D)mm
<b>Weight (Net)</b>	1.3kg
<b>LED Driving Board</b>	LID 10A
<b>Control Board (Optional)</b>	<input type="checkbox"/> AD6038G <input type="checkbox"/> AD6038GA <input type="checkbox"/> AD6038GD
<input type="checkbox"/> AD6038G	VGA
<input type="checkbox"/> AD6038GA	VGA+Audio
<input type="checkbox"/> AD6038GD	VGA+DVI
<b>F / R Control Button</b>	<input type="checkbox"/> 5 Key <input type="checkbox"/> 4 Key
<input type="checkbox"/> 5 Key	Power Switch, Menu, Select (+,-), Auto
<input type="checkbox"/> 4 Key	Power Switch, Menu, Select (+,-),
<b>OSD Menu</b>	Brightness, Contrast, H/V Position, Color, Phase, Clock...
<b>Optional</b>	<input type="checkbox"/> AOT <input type="checkbox"/> Touch Screen

*Specifications are subject to change without notice.*

*All brands or product names are trademarks or registered trademarks of their respective companies.*

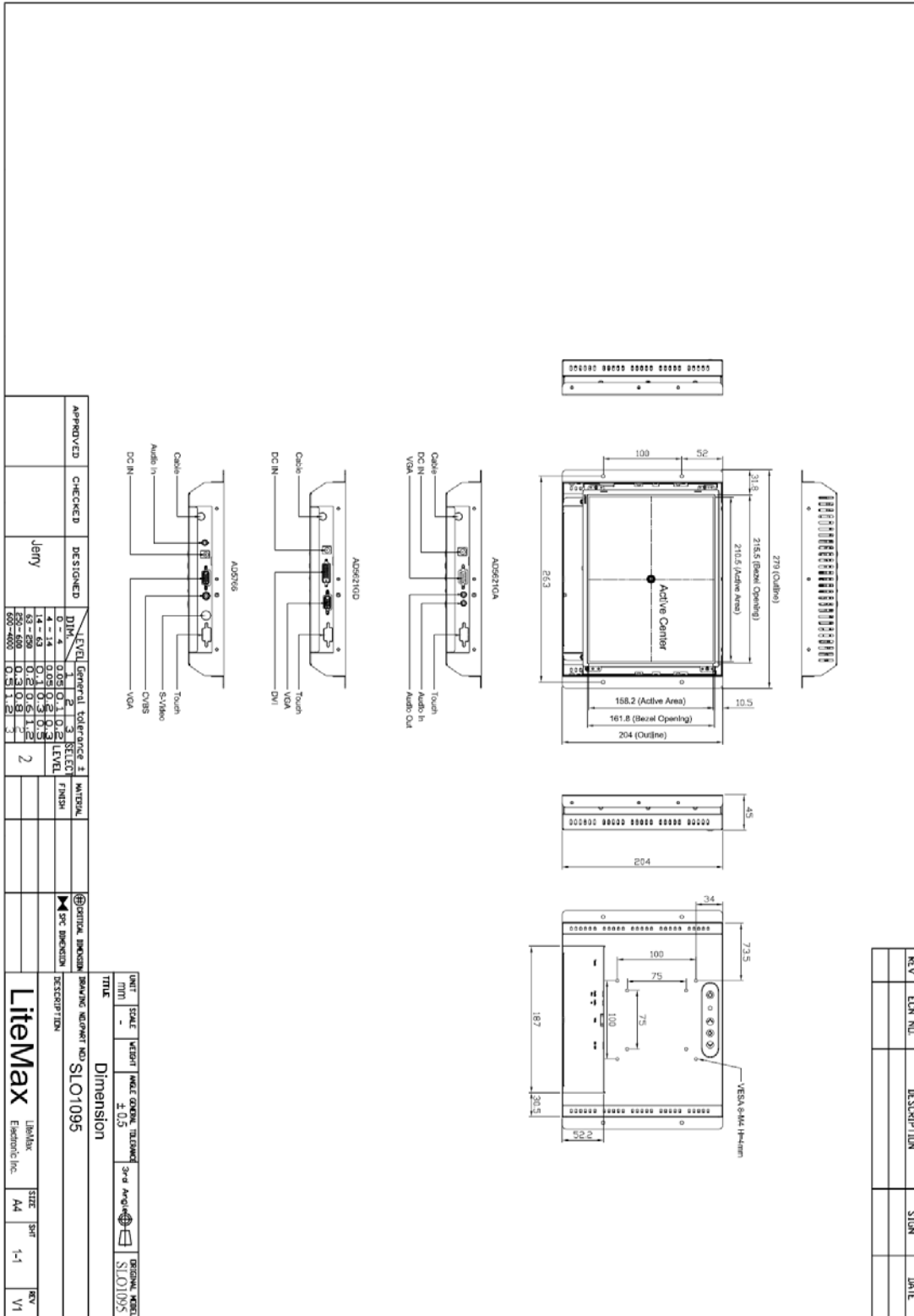
**SLO**= Panel+LED Driving Board+Control Board



# Mechanical Drawing

## Outline Dimensions

Unit:mm



REV	ECN NO.	DESCRIPTION	SIGN.	DATE

APPROVED	CHECKED	DESIGNED	Jerry
LEVEL		General tolerance ±	
1	2	3	SELECT
0.1	0.05	0.03	LEVEL
14-43	0.1	0.05	FINISH
43-69	0.1	0.05	2
69-99	0.1	0.05	
99-120	0.1	0.05	
120-150	0.1	0.05	
150-200	0.1	0.05	
200-250	0.1	0.05	
250-300	0.1	0.05	
300-400	0.1	0.05	
400-500	0.1	0.05	
500-600	0.1	0.05	
600-700	0.1	0.05	
700-800	0.1	0.05	
800-900	0.1	0.05	
900-1000	0.1	0.05	

UNIT	SCALE	WEIGHT	WAVE SYMBOL	TERMINAL	3rd Angle	ORIGINAL NUMBER
MM	-	±0.5				SLOT095
TITLE						
Dimension						
DRAWING NUMBER NO. SLOT095						
DESCRIPTION						
LietMax						
LietMax Electronic Inc.		SIZE	SHEET		REV	
		A4	1-1		V1	



### Ordering Information

Model Name	Description
<b>SLO1095-EGB-I11</b>	10.4",1300nits,XGA,LID10A,AD6038GA,O/B,AR Glass,DC 12V, V02

### Optional Accessories

Part Number	Description
<b>840612051100</b>	ADAPTER.12V.5A.60W.EA1050A,P
<b>810618301010</b>	CABLE.POWER.AC.1830mm USA type
<b>810618301090</b>	CABLE,POWER,AC,1830mm Europe type
<b>810618301050</b>	CABLE.POWER.AC.1830mm UK type
<b>810618301170</b>	CABLE.POWER,AC,1830mm Australia type
<b>810618301030</b>	CABLE.POWER.AC.1830mm Japan type