



SLO0868

8.4" Open Frame TFT LCD Display, LED Backlight, 1600nits, SVGA(800x600)

SLO0868 is an open frame LCD display, built-in 1600 nits high brightness for sunlight readable application. Features wide operating temperature, high brightness, AOT optical bonding, touch screen capable, and customized mechanical design; fulfill the demand for extreme environments. The high level of brightness together with LED backlight technology, the monitor brings remarkable display quality. And guaranteeing product life cycle longevity, stability, and reliability. Perfectly suitable for kiosk, ATM, POS, military, transportation, and outdoor industrial application.

Key Features

- Sunlight Readable
- LED Backlight
- High Shock & Vibration Resistance
- Wide Operation Temperature
- High Uniformity
- Low EMI Noise
- Wide Dimming
- Life Expectancy



Specifications

Preliminary

Model No.	SLO0868
Description	8.4" Open Frame TFT LCD Display, LED Backlight, 1600nits, SVGA(800x600)
Display Area (mm)	170.4 x 127.8mm
Brightness	1600 cd/m ²
Resolution	SVGA (800 x 600)
Contrast Ratio	600 : 1
Pixel Pitch (mm)	0.213 x 0.213
Viewing Angle	160°(H), 140°(V)
Display Colors	16.2M / 262K
Response Time (Typical)	35 ms
Power Consumption	9.7W
Dimensions (mm)	253 x 153.2 x 43.6mm
Weight (Net)	1.3Kg
LED Driving Board	LID08A06
Control Board (Optional)	
<input type="checkbox"/> AD5621GA	VGA+Audio
<input type="checkbox"/> AD5621GD	VGA+DVI
<input type="checkbox"/> AD2662GDVAR	VGA+DVI (Optional S-Video/ Component / Audio)
F / R Control Button	<input type="checkbox"/> 5 Key <input type="checkbox"/> 4 Key
<input type="checkbox"/> 5 Key	Power Switch, Menu, Select (+,-), Auto
<input type="checkbox"/> 4 Key	Power Switch, Menu, Select (+,-),
OSD Menu	Brightness, Contrast, H/V Position, Color, Phase, Clock...
Optional	<input type="checkbox"/> AOT <input type="checkbox"/> Touch Screen

Specifications are subject to change without notice.

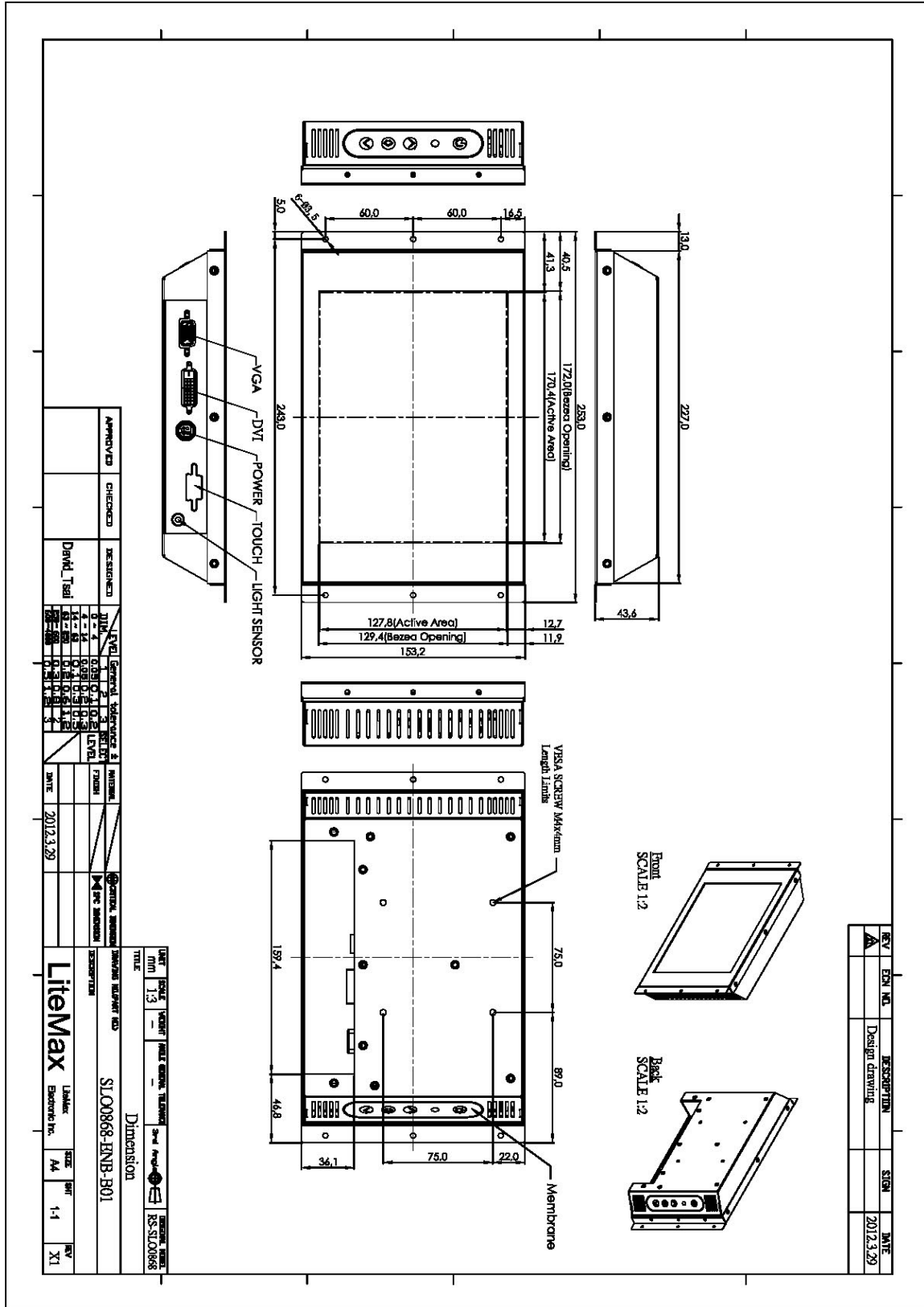
All brands or product names are trademarks or registered trademarks of their respective companies.



Mechanical Drawing

Outline Dimensions

Unit: mm





Ordering Information

Part Number	Description
SLO0868-ENB-A01	8.4",1600nits,SVGA,LID08A06.O/B,AD5621GA,V01
SLO0868-ENB-B01	8.4",1600nits,SVGA,LID08A06.O/B,AD5621GD,V01

Optional Accessories

Part Number	Description
810618301010	CABLE.POWER.AC.1830mm USA type
810618301090	CABLE,POWER,AC,1830mm Europe type
810618301050	CABLE.POWER.AC.1830mm UK type
810618301170	CABLE.POWER,AC,1830mm Australia type
810618301030	CABLE.POWER.AC.1830mm Japan type