



SLD4626

46" TFT LCD Display, LED Backlight, 1200nits,FHD(1920x1080)

46" TFT LCD panel, built-in 1200 nits high bright for sunlight readable LCD display, high transmittance color filter, high transmission polarizing plates, Low Power Consumption, suitable for kiosk, Digital Signage, gaming, studio display, gas pump.

Key Features

- Sunlight Readable
- LED Backlight
- Full HD(1920x1080)
- Low Power Consumption
- High Uniformity
- Low EMI Noise
- Wide Dimming
- Life Expectancy
- Wide Viewing Angle



Specifications

V1

| | |
|--------------------------------------|--|
| Model No. | SLD4626 |
| Description | 46" TFT LCD Display, LED Backlight, 1200nits, FHD(1920x1080) |
| Display Area (mm) | 1018.08(H) x 572.6(V) |
| Brightness | 1200 cd/m ² |
| Resolution | 1920x1080 (FHD) |
| Contrast Ratio | 6000 : 1 |
| Pixel Pitch (mm) | 0.53025 (H) x 0.53025(W) |
| Viewing Angle | 176°(H), 176°(V) |
| Display Colors | 16.7M |
| Response Time (Typical) | 6.5ms |
| Power Consumption | 166W |
| Dimensions (mm) | 1051.54 x 607.2 x 67 |
| Weight (Net) | 20 kg |
| LED Driving Board | LID46B |
| Control Board (Optional) | AD2662GD / AD2662GDVAR/AD2662GDHM |
| <input type="checkbox"/> AD2662GD | VGA+DVI |
| <input type="checkbox"/> AD2662GDVAR | VGA+DVI (Optional S-Video/ Component / Audio) |
| <input type="checkbox"/> AD2662GDHM | VGA+DVI +HDMI |
| F / R Control Button | <input type="checkbox"/> 5 Key <input type="checkbox"/> 4 Key |
| <input type="checkbox"/> 5 Key | Power Switch, Menu, Select (+,-), Auto |
| <input type="checkbox"/> 4 Key | Power Switch, Menu, Select (+,-), |
| OSD Menu | Brightness, Contrast, H/V Position, Color, Phase, Clock... |
| Optional | <input type="checkbox"/> AOT <input type="checkbox"/> Touch Screen |

Specifications are subject to change without notice.

All brands or product names are trademarks or registered trademarks of their respective companies.

DLF= Panel+ LED Driving Board

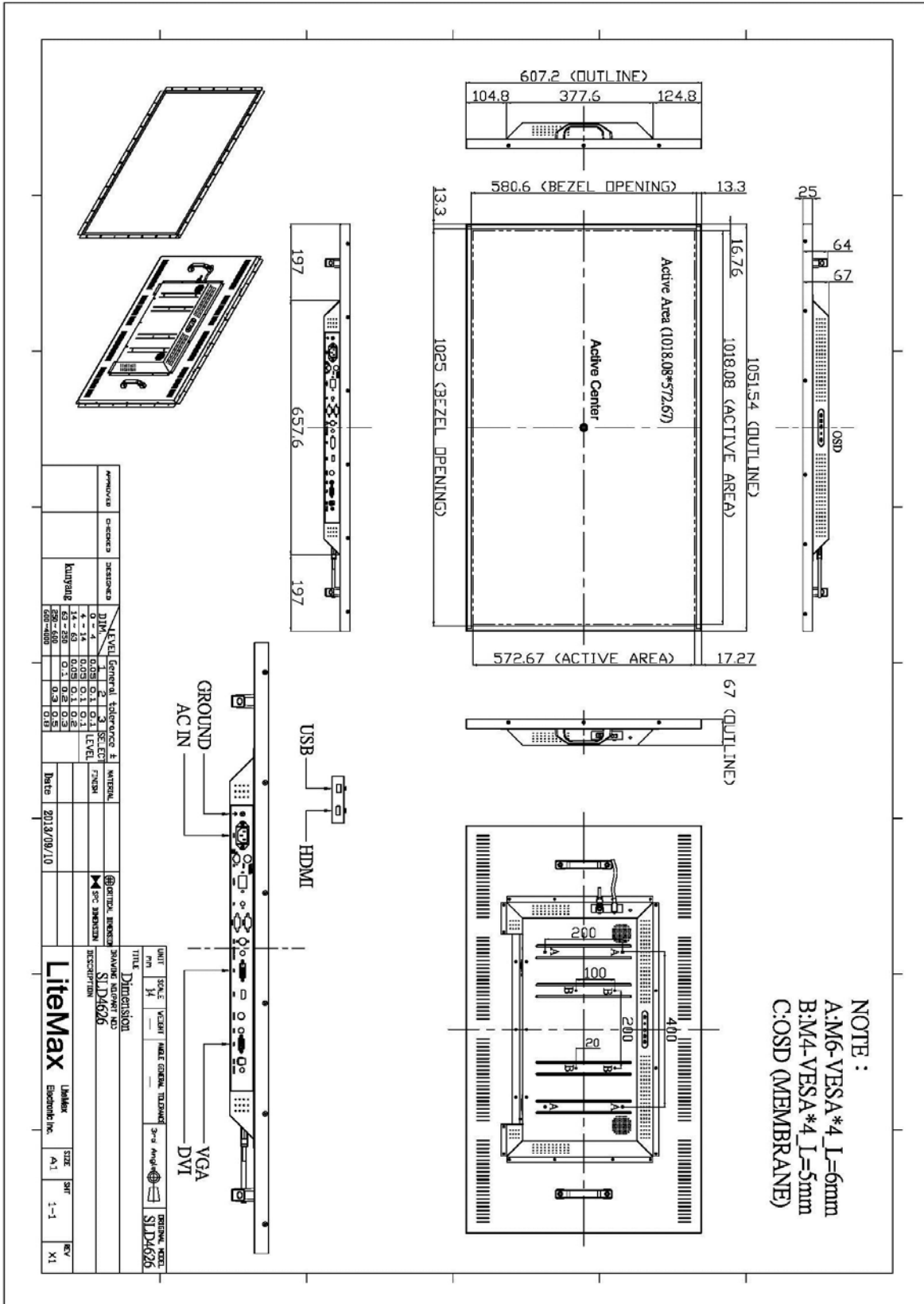
DLH= Panel+ LED Driving Board + Control Board



Mechanical Drawing

Outline Dimensions

Unit:mm





Ordering Information

| Part Number | Description |
|-----------------|---|
| SLD4626-ENB-G01 | 46",1200nits,FHD,LID46B,AC2662GD, O/B,AC100~240V input,V01 |
| SLD4626-ENB-G02 | 46",1200nits,FHD,LID46B,AC2662GDHM,USB+HDMI board ,O/B,AC100~240V input,V01 |
| | |

Optional Accessories

| Part Number | Description |
|--------------|--------------------------------------|
| 810618301010 | CABLE.POWER.AC.1830mm USA type |
| 810618301090 | CABLE,POWER,AC,1830mm Europe type |
| 810618301050 | CABLE.POWER.AC.1830mm UK type |
| 810618301170 | CABLE.POWER,AC,1830mm Australia type |
| 810618301030 | CABLE.POWER.AC.1830mm Japan type |