



SLD1095-E V2
10.4" TFT LCD, LED Backlight 1300nits,XGA

10.4" TFT LCD panel, built-in 1300 nits high bright for sunlight readable LCD display, high transmittance color filter, high transmission polarizing plates, Low Power Consumption, suitable for kiosk, advertising, POS, marine, transportation, gaming, studio display, gas pump.

Key Features

- Sunlight Readable
- LED Backlight
- High Shock & Vibration Resistance
- Low Power Consumption
- Wide Operation Temperature. (-20°C ~ 70°C)
- High Uniformity (90%)
- Low EMI Noise
- Wide Dimming
- Life Expectancy (70,000hrs)

Applications

Marine, Military,
 Medical, Transportation
 Industrial



Specifications

V1

Model No.	SLD095-E V2
Description	10.4" TFT LCD, LED Backlight 1300 nits, XGA
Display Area (mm)	210.432 (H) x 157.824(V) mm
Brightness	1,300 cd/m ²
Resolution	1024 x 768 (XGA)
Contrast Ratio	600 : 1
Pixel Pitch (mm)	0.2055(H) x 0.2055(V)
Viewing Angle	+89°~-89°(H), +89°~-89°(V)
Display Colors	262K colors
Response Time (Typical)	36ms (Typical)
Sync	LVDS
Power Consumption	10W
Dimensions (mm)	249.2(W) x 206.2(H) x 45.8(D)mm
Weight (Net)	1.64kg
LED Driving Board	LID 10A
Control Board (Optional)	<input type="checkbox"/> AD6038G <input type="checkbox"/> AD6038GA <input type="checkbox"/> AD6038GD
<input type="checkbox"/> AD6038G	VGA
<input type="checkbox"/> AD6038GA	VGA+Audio
<input type="checkbox"/> AD6038GD	VGA+DVI
F / R Control Button	<input type="checkbox"/> 5 Key <input type="checkbox"/> 4 Key
<input type="checkbox"/> 5 Key	Power Switch, Menu, Select (+,-), Auto
<input type="checkbox"/> 4 Key	Power Switch, Menu, Select (+,-),
OSD Menu	Brightness, Contrast, H/V Position, Color, Phase, Clock...
Optional	<input type="checkbox"/> AOT <input type="checkbox"/> Touch Screen

Specifications are subject to change without notice.

All brands or product names are trademarks or registered trademarks of their respective companies.

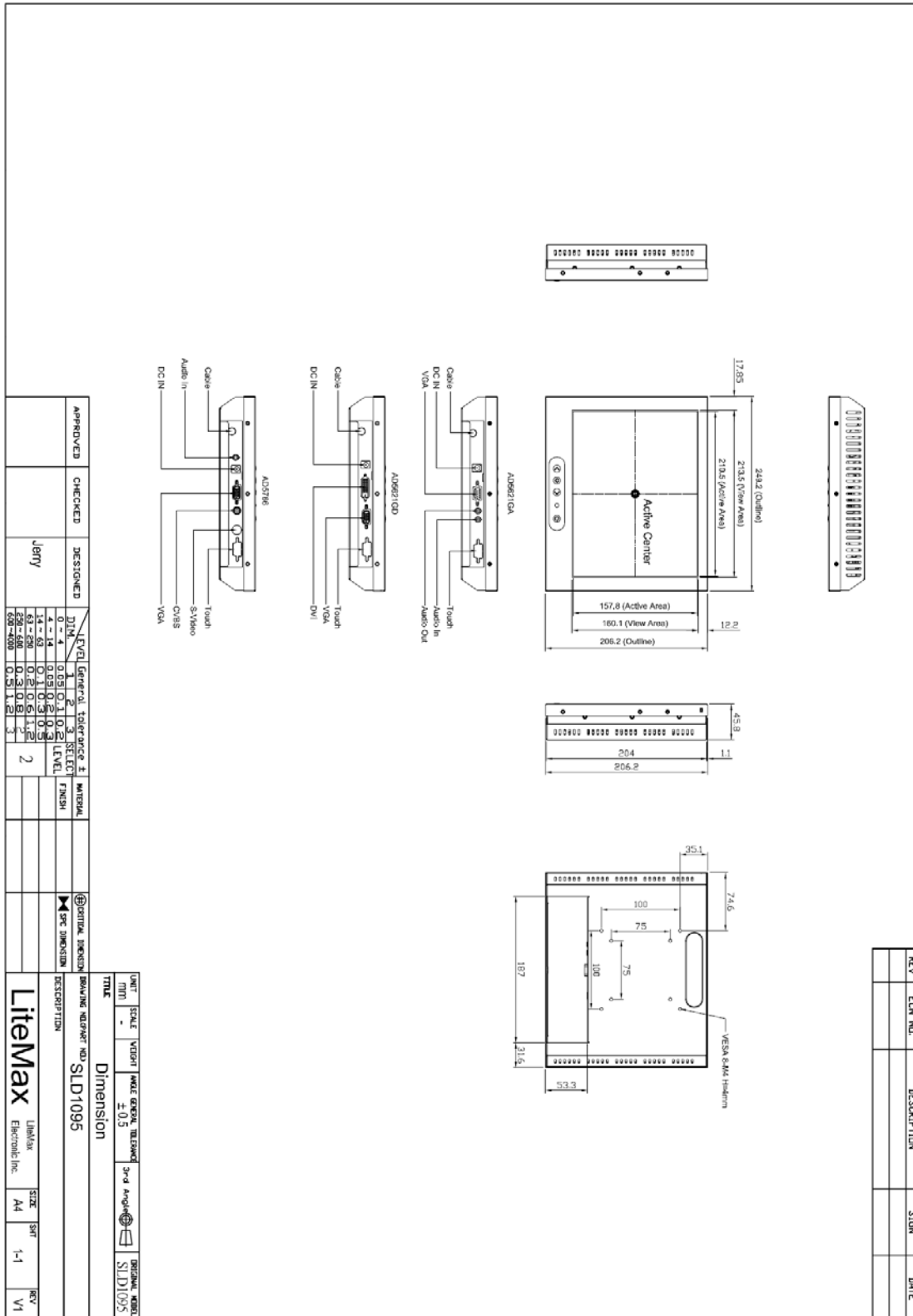
SLD= Panel+LED Driving Board+Control Board



Mechanical Drawing

Outline Dimensions

Unit:mm





Ordering Information

Model Name	Description
SLD1095-EGA-I11	10.4",1300nits,XGA,LID10A,AD6038GA,O/F,AR Glass,DC 12V, V02

Optional Accessories

Part Number	Description
840612051100	ADAPTER.12V.5A.60W.EA1050A,P
810618301010	CABLE.POWER.AC.1830mm USA type
810618301090	CABLE,POWER,AC,1830mm Europe type
810618301050	CABLE.POWER.AC.1830mm UK type
810618301170	CABLE.POWER,AC,1830mm Australia type
810618301030	CABLE.POWER.AC.1830mm Japan type