



## DLF\_DLH1564 V3

### 15" TFT LCD, LED Backlight 1000nits,XGA(1024x768)

15" TFT LCD panel, built-in 1000 nits high bright for sunlight readable LCD display, high transmittance color filter, high transmission polarizing plates, Low Power Consumption, suitable for kiosk, advertising, POS, marine, transportation, gaming, studio display, gas pump.

#### Key Features

- Ultra Brightness: 1000nits
- LED Backlight
- XGA(1024x768) High Definition
- High Shock & Vibration Resistance
- Low Power Consumption
- High Uniformity
- Low EMI Noise
- Wide Dimming
- Wide Operation temperature
- Life Expectancy



### Specifications

V1

Model No.	DLF1564 V3	DLH1564 V3
Description	15" TFT LCD, LED Backlight 1000nits,XGA(1024x768)	
Display Area (mm)	304.13(H) x 228.1(V) mm	
Brightness	1000 cd/m <sup>2</sup>	
Resolution	1024x768 (XGA)	
Contrast Ratio	1000 : 1	
Pixel Pitch (mm)	0.297(H) x 0.297(V)	
Pixel Pre Inch (PPI)	85	
Viewing Angle	+80°~-80°(H), +80°~-80°(V)	
Color Saturation (NTSC)	69%	
Display Colors	16.7M	
Response Time (Typical)	8ms	
Operating Temperature	-20°C ~ 70°C	
Storage Temperature	-30°C ~ 80°C	
Power Consumption	11W	14W
Dimensions (mm)	326.5 x 253.5 x 21 (mm)	
Weight (Net)	1.0kg	1.1kg
LED Driving Board	LID15A	
Control Board (Optional)	<input type="checkbox"/> AD6038GA <input type="checkbox"/> AD6038GD	
<input type="checkbox"/> AD6038GA	VGA+Audio	
<input type="checkbox"/> AD6038GD	VGA+DVI	
Control Button	<input type="checkbox"/> 4 Key	
<input type="checkbox"/> 4 Key	Power Switch, Menu, Select (+,-),	
OSD Menu	Brightness, Contrast, H/V Position, Color, Phase, Clock...	
Optional	<input type="checkbox"/> AOT <input type="checkbox"/> Touch Screen	

*Specifications are subject to change without notice.*

*All brands or product names are trademarks or registered trademarks of their respective companies.*

**DLF**= Panel+LED Driving Board

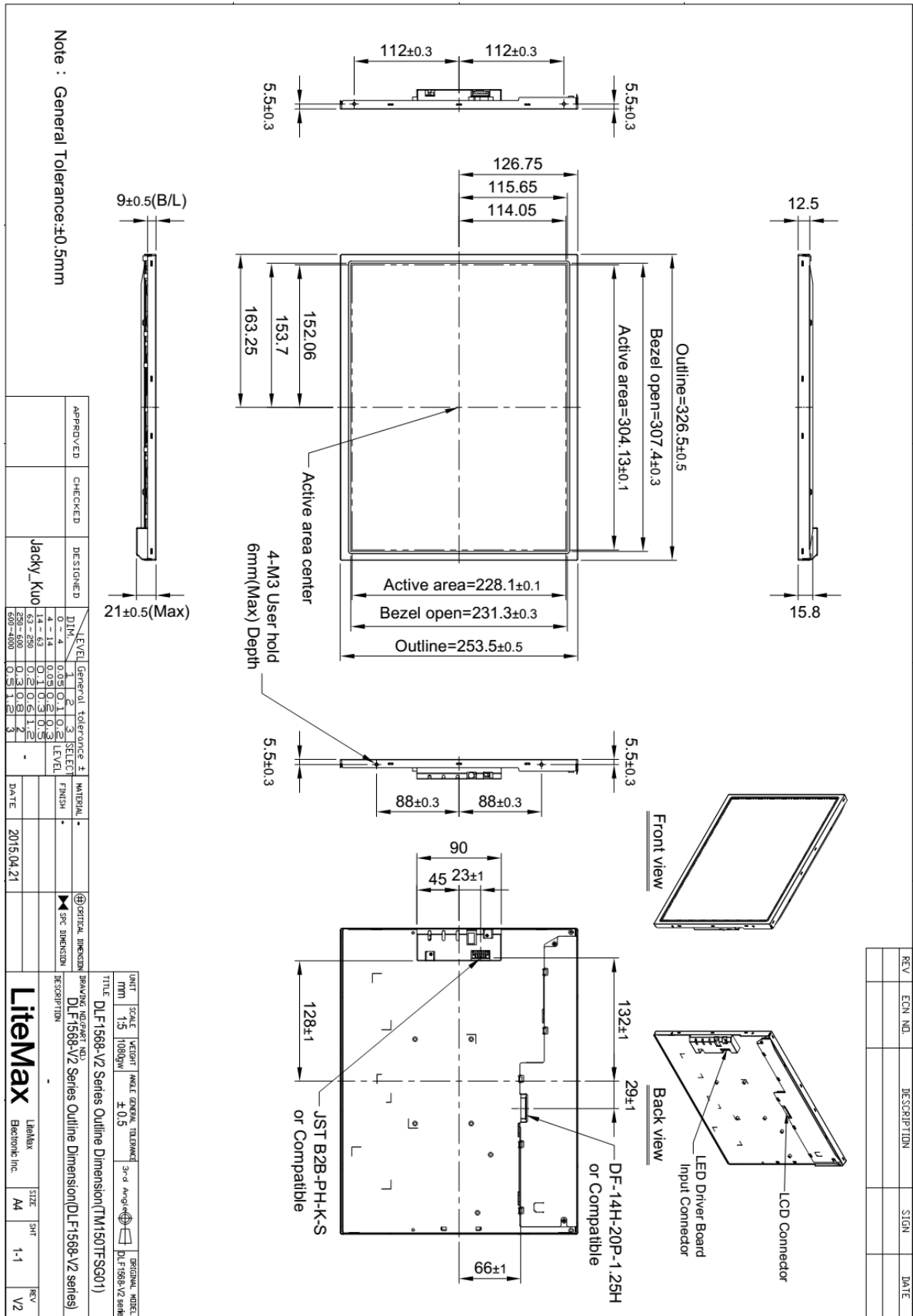
**DLH**= Panel+LED Driving Board+Control Board



# Mechanical Drawing

## Outline Dimensions

Unit:mm





### Ordering Information

Part Number	Description
<b>DLF1564-ENN-A21</b>	15",1000nits,XGA,LID15A,1in1,V3
<b>DLF1564-ENN-A22</b>	15",1000nits,XGA,LID15A,5in1,V3
<b>DLH1564-ENN-I21</b>	15",1000nits,XGA,LID15A,AD6038GA,DC12V,1in1,V3
<b>DLH1564-ENN-I22</b>	15",1000nits,XGA,LID15A,AD6038GA,DC12V,5in1,V3
<b>DLH1564-ENN-I23</b>	15",1000nits,XGA,LID15A,AD6038GD,DC12V,1in1,V3
<b>DLH1564-ENN-I24</b>	15",1000nits,XGA,LID15A,AD6038GD,DC12V,5in1,V3

### Optional Accessories

Part Number	Description
<b>840612051100</b>	ADAPTER.12V.5A.60W.EA1050A,P
<b>810618301010</b>	CABLE.POWER.AC.1830mm USA type
<b>810618301090</b>	CABLE,POWER,AC,1830mm Europe type
<b>810618301050</b>	CABLE.POWER.AC.1830mm UK type
<b>810618301170</b>	CABLE.POWER,AC,1830mm Australia type
<b>810618301031</b>	CABLE.POWER.AC.1830mm Japan type