


*Industrial Solutions Partner!*
**HB-21      SLD2118**  
**21.5" Wide TFT LCD, LED Backlight 1600nits,FHD (1920x1080)**

21.5" wide is a full high definition (FHD) LCD panel, built-in 1600 nits high bright for sunlight readable LCD display, high transmittance color filter, high transmission polarizing plates, Low Power Consumption, suitable for kiosk, advertising, POS, marline, transportation, gaming, studio display, gas pump.

**Key Features**

- Sunlight Readable
- LED Backlight
- High Shock & Vibration Resistance
- Low Power Consumption
- High Uniformity
- Low EMI Noise
- Wide Dimming
- Life Expectancy

**Applications**

- Marline
- Military
- Medical
- Transportation
- Industrial


**Specifications**
**V1**

<b>Model No.</b>	<b>SLD2118</b>
<b>Description</b>	21.5" Wide TFT LCD, LED Backlight 1600 nits, FHD
<b>Display Area (mm)</b>	476.64 (H) x 268.11(V)
<b>Brightness</b>	1,600 cd/m <sup>2</sup>
<b>Resolution</b>	1920 x 1080 (FHD)
<b>Contrast Ratio</b>	900 : 1
<b>Pixel Pitch (mm)</b>	0.24825(H) x 0.24825(V)
<b>Viewing Angle</b>	170°(H), 160°(V)
<b>Display Colors</b>	16.7M colors
<b>Response Time (Typical)</b>	5 ms
<b>Sync</b>	LVDS
<b>Power Consumption</b>	41W
<b>Dimensions (mm)</b>	500.2(W) x 294.6(H) x 35.5(D)mm
<b>Weight (Net)</b>	5Kg
<b>LED Driving Board</b>	LID21A
<b>Control Board (Optional)</b>	<input type="checkbox"/> AD2662GD <input type="checkbox"/> AD2662GDVAR
<input type="checkbox"/> AD2662GD	VGA+DVI
<input type="checkbox"/> AD2662GDVAR	VGA+DVI (Optional S-Video/ Component / Audio / RS232)
<b>F / R Control Button</b>	<input type="checkbox"/> 5 Key <input type="checkbox"/> 4 Key
<input type="checkbox"/> 5 Key	Power Switch, Menu, Select (+,-), Auto
<input type="checkbox"/> 4 Key	Power Switch, Menu, Select (+,-),
<b>OSD Menu</b>	Brightness, Contrast, H/V Position, Color, Phase, Clock...
<b>Optional</b>	<input type="checkbox"/> AOT <input type="checkbox"/> Touch Screen

*Specifications are subject to change without notice.*

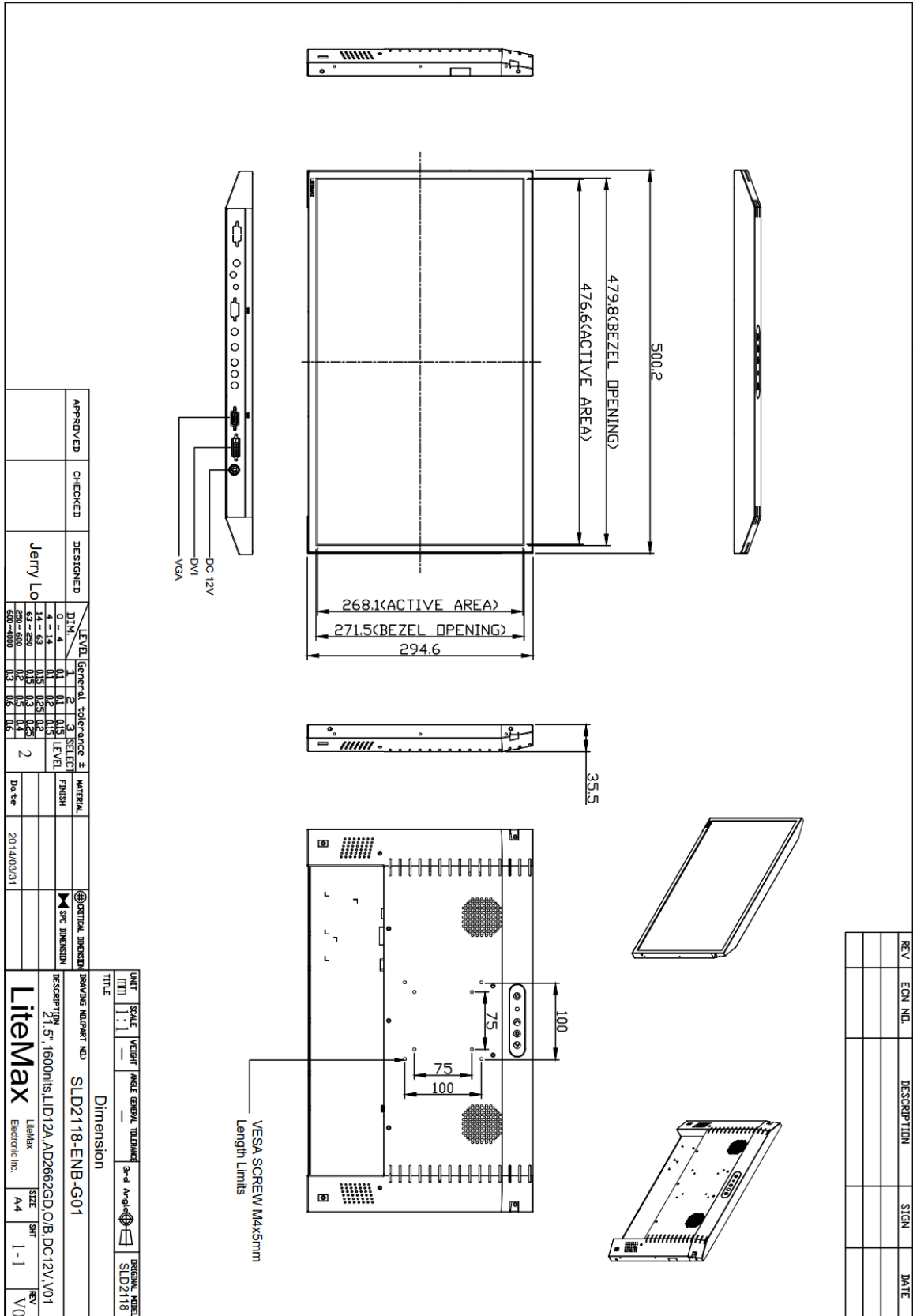
*All brands or product names are trademarks or registered trademarks of their respective companies.*



# Mechanical Drawing

## Outline Dimensions

Unit:mm





### Ordering Information

Model Name	Description
SLD2118-ENB-G01	21.5",1600nits,FHD,LID21A,AD2662GD,O/B,DC12V input,V1

### Optional Accessories

Part Number	Description
980000460010	SET.OTHER,ADAPTER REWORK.60W PAA060F WITH.POWER DIN 4pin lock,P
810618301010	CABLE.POWER.AC.1830mm USA type
810618301090	CABLE,POWER,AC,1830mm Europe type
810618301050	CABLE.POWER.AC.1830mm UK type
810618301170	CABLE.POWER,AC,1830mm Australia type
810618301030	CABLE..POWER.AC.1830mm Japan type