



SSD4848-A

48.4" Resizing LCD, 1600nits LED backlight, 1920x358 ultra wide aspect ratio 16:3

SSD4848-A is an innovative ultra-wide, sunlight readable, LED backlight LCD display. It provides LCD panel with specific ratios for digital signage, public transportation, exhibition hall, department store, vending machine and industrial applications. Incorporating with A.D. control board and backlight design, it is high brightness and sunlight readable panel, can display high-quality video with energy-efficient.

Key Features

- Resizing LCD
- Ultra Wide Screen (16 : 3)
- Sunlight Readable
- LED Backlight
- High Brightness 1600 nits
- Low Power Consumption
- Wide Dimming
- Life Expectancy (70,000hrs)
- Slim Bezel



Applications

Digital Signage
Information

Specifications

V1

Model No.	SSD4848-A
Description	48.4" Wide TFT LCD, LED Backlight 1600 nits, 1920x358
Active Display Area (mm)	1209.6 x 225.5mm
Brightness	1600cd/m ²
Resolution	1920 x 358
Aspect Ratio	16 : 3
Contrast Ratio	8000:1
Pixel Pitch (mm)	0.21(H) x 0.63(V) mm
Viewing Angle	R/L 178(Typ.), U/D 178(Typ.)
Display Colors	16.7M colors
Response Time (Typical)	6.5 ms
Sync	LVDS
Power Consumption	83W
Outline Dimensions (mm)	1247.5 x 268 x 66.6
Weight (Net)	11.5kg
LED Driving Board	LID48A
Control Board (Optional)	<input type="checkbox"/> AD2662GDHMMVAR
<input type="checkbox"/> AD2662GDHMMVAR	VGA,DVI,HDMI (option AV/ S-Video/ Component/ Audio)
F / R Control Button	<input type="checkbox"/> 4 Key
<input type="checkbox"/> 4 Key	Power Switch, Menu, Select (+,-),
OSD Menu	Brightness, Contrast, H/V Position, Color, Phase, Clock...
Optional	<input type="checkbox"/> AOT <input type="checkbox"/> Touch Screen

Specifications are subject to change without notice.

All brands or product names are trademarks or registered trademarks of their respective companies.

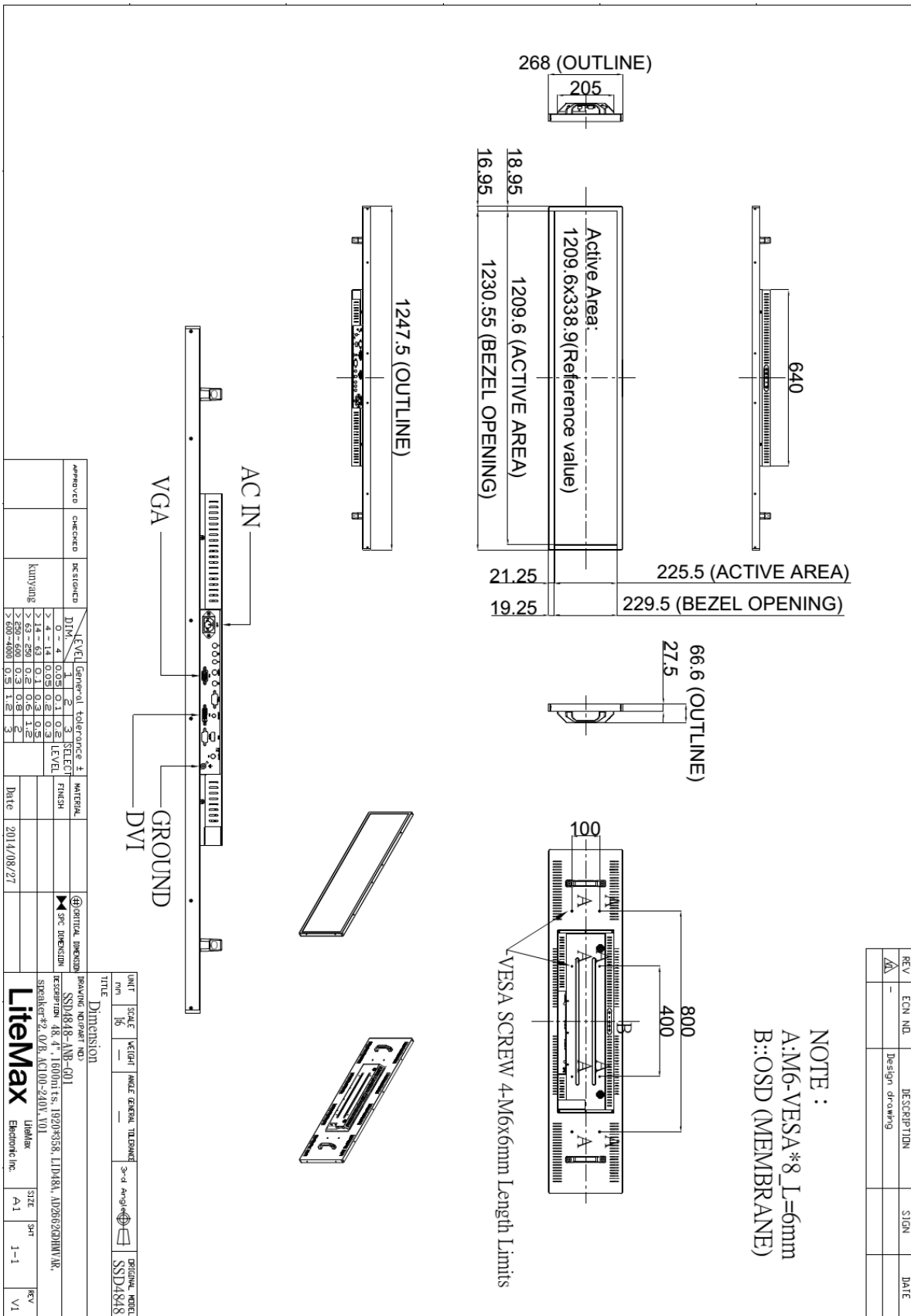
SSD = Panel + LED Driving Board + Control Board



Mechanical Drawing

Outline Dimensions

Unit:mm





Ordering Information

Model Name	Description
SSD4848-ANB-G01	48.4",1600nits,1920X358,LID48A,AD2662GDHMVAR,O/B,AC100~240V,V01

Optional Accessories

Part Number	Description
980000460010	SET.OTHER,ADAPTER REWORK.60W PAA060F WITH.POWER DIN 4pin lock,P
810618301010	CABLE.POWER.AC.1830mm USA type
810618301090	CABLE,POWER,AC,1830mm Europe type
810618301050	CABLE.POWER.AC.1830mm UK type
810618301170	CABLE.POWER,AC,1830mm Australia type
810618301031	CABLE.POWER.AC.1830mm Japan type