



SSD1922 V2

19" Resizing LCD Monitor, Brightness is 400 nits, LED backlight, 1920x388 ultra wide aspect ratio 16:3.2

SSD1922 V2 is an innovative ultra-wide, LED backlight LCD monitor. It provides LCD panel with specific ratios for digital signage, public transportation, exhibition hall, department store, and vending machine applications.

Key Features

- Resizing LCD
- Ultra Wide Screen (16 : 3.2)
- LED Backlight
- High Brightness 400nits
- Wide Viewing Angle
- High Resolution
- Wide Dimming



Specifications

V1

| | |
|--------------------------------------|--|
| Model No. | SSD1922 V2 |
| Description | 19" Resizing LCD Monitor, 400nits, LED backlight, 1920x388 |
| Display Area (mm) | 476.6 x 96.3 mm |
| Brightness | 400nits |
| Resolution | 1920 x 388 |
| Aspect Ratio | 16 : 3.2 |
| Contrast Ratio | 3000 : 1 |
| Pixel Pitch (mm) | 0.248(H) x 0.248(V) |
| Pixel Per Inch (PPI) | 103 |
| Viewing Angle | 178°(H), 178°(V) |
| Color Saturation (NTSC) | 83% |
| Display Colors | 16.7M |
| Response Time (Typical) | 25 ms |
| Sync | LVDS |
| Operating Temperature | 0°C ~ 50°C |
| Storage Temperature | -20°C ~ 60°C |
| Power Consumption | 22.2W |
| Dimensions (mm) | 506 x 132 x 47.3 mm |
| Weight (Net) | 3.0Kg |
| LED Driving Board | LID21A |
| Control Board (Optional) | <input type="checkbox"/> AD2662GDVAR <input type="checkbox"/> AD2662GDHM |
| <input type="checkbox"/> AD2662GDVAR | VGA+DVI (Optional S-Video/ Component / Audio) |
| <input type="checkbox"/> AD2662GDHM | VGA+DVI+HDMI |
| Rear Control Button | <input type="checkbox"/> 4 Key |
| <input type="checkbox"/> 4 Key | Power Switch, Menu, Select (+,-), |
| OSD Menu | Brightness, Contrast, H/V Position, Color, Phase, Clock... |
| Optional | <input type="checkbox"/> AOT |

Specifications are subject to change without notice.

All brands or product names are trademarks or registered trademarks of their respective companies.

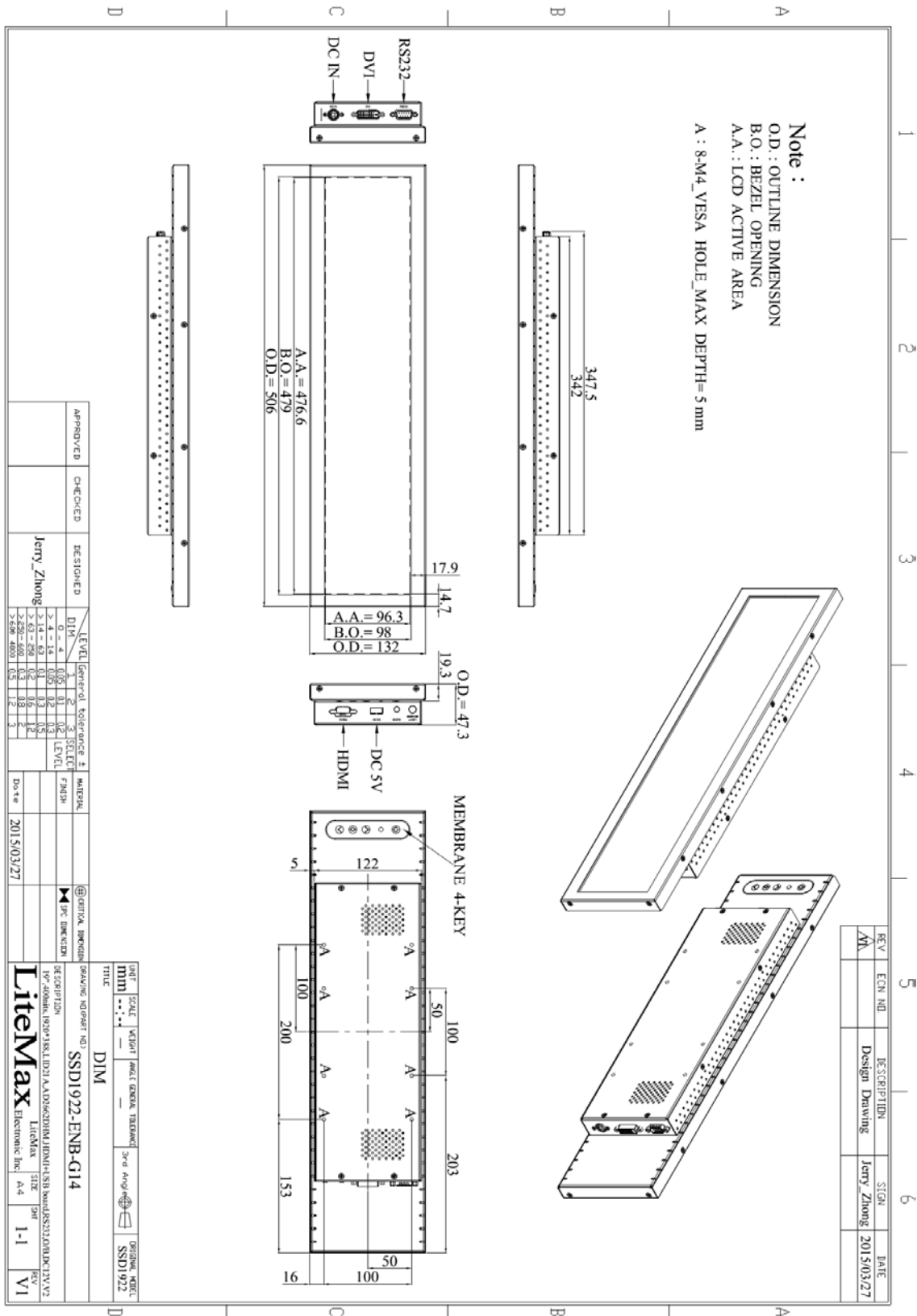
SSD= Resizing Panel+LED Driving Board+Control Board+Housing



Mechanical Drawing

Outline Dimensions

Unit:mm





Ordering Information

| Model Name | Description |
|-----------------|--|
| SSD1922-ENB-G11 | 19",400nits,1920*388,LID21A04.O/B,AD2662GD,DC 12V,V2 |

Optional Accessories

| Part Number | Description |
|--------------|---|
| 840612051210 | ADAPTER,AC/DC,12V/5.4A,65W,Atech OEM A065112-TDx,4P SLIDING CAP,P |
| 810618301010 | CABLE.POWER.AC.1830mm USA type |
| 810618301090 | CABLE.POWER.AC,1830mm Europe type |
| 810618301050 | CABLE.POWER.AC.1830mm UK type |
| 810618301170 | CABLE.POWER.AC,1830mm Australia type |
| 810618301031 | CABLE.POWER.AC.1830mm Japan type |