



SLO4626

46" TFT LCD Display, LED Backlight, 1200nits,FHD(1920x1080)

46" TFT LCD panel, built-in 1200 nits high bright for sunlight readable LCD display, high transmittance color filter, high transmission polarizing plates, Low Power Consumption, suitable for kiosk, Digital Signage, gaming, studio display, gas pump.

Key Features

- Sunlight Readable
- LED Backlight
- Full HD(1920x1080)
- Low Power Consumption
- High Uniformity
- Low EMI Noise
- Wide Dimming
- Life Expectancy
- Wide Viewing Angle



Specifications

V1

Model No.	SLO4626
Description	46" TFT LCD Display, LED Backlight, 1200nits, FHD(1920x1080)
Display Area (mm)	1018.08(H) x 572.6(V)
Brightness	1200 cd/m ²
Resolution	1920x1080 (FHD)
Contrast Ratio	6000 : 1
Pixel Pitch (mm)	0.53025 (H) x 0.53025(W)
Viewing Angle	176°(H), 176°(V)
Display Colors	16.7M
Response Time (Typical)	6.5ms
Power Consumption	166 W
Dimensions (mm)	1101.6 x 657.2 x 67
Weight (Net)	21.5 kg
LED Driving Board	LID46B
Control Board (Optional)	AD2662GD / AD2662GDVAR/AD2662GDHM
<input type="checkbox"/> AD2662GD	VGA+DVI
<input type="checkbox"/> AD2662GDVAR	VGA+DVI (Optional S-Video/ Component / Audio)
<input type="checkbox"/> AD2662GDHM	VGA+DVI+HDMI
F / R Control Button	<input type="checkbox"/> 5 Key <input type="checkbox"/> 4 Key
<input type="checkbox"/> 5 Key	Power Switch, Menu, Select (+,-), Auto
<input type="checkbox"/> 4 Key	Power Switch, Menu, Select (+,-),
OSD Menu	Brightness, Contrast, H/V Position, Color, Phase, Clock...
Optional	<input type="checkbox"/> AOT <input type="checkbox"/> Touch Screen

Specifications are subject to change without notice.

All brands or product names are trademarks or registered trademarks of their respective companies.

DLF= Panel+ LED Driving Board

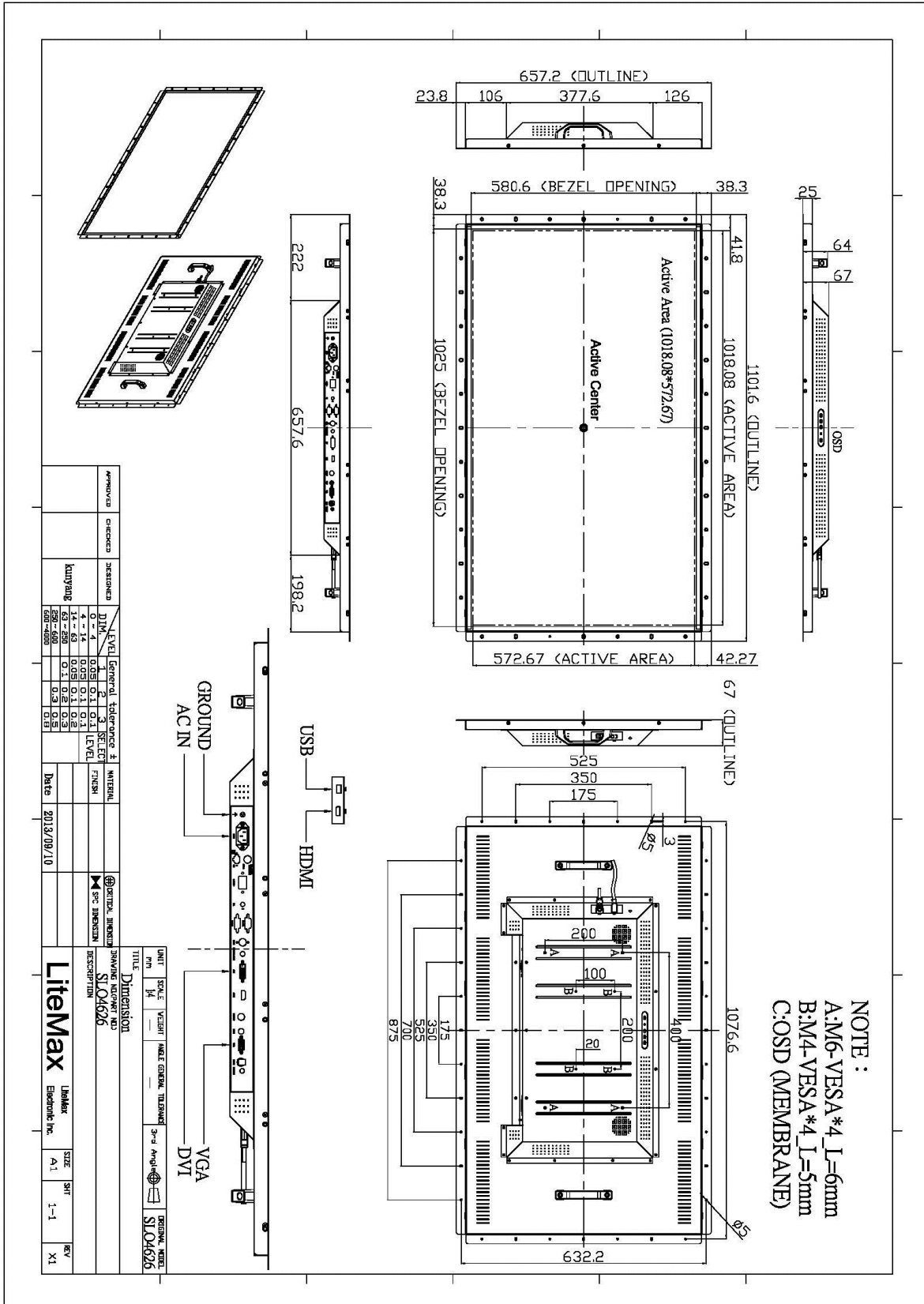
DLH= Panel+ LED Driving Board + Control Board



Mechanical Drawing

Outline Dimensions

Unit:mm



NOTE :
A:M6-VESA*4 L=6mm
B:M4-VESA*4 L=5mm
C:OSD (MEMBRANE)



Ordering Information

Part Number	Description
SLO4626-ENB-G01	46",1200nits,FHD,LID46B,AC2662GD, O/B, AC100~240V input,V01
SLO4626-ENB-G02	46",1200nits,FHD,LID46B,AC2662GDHM,USB+HDMI board, O/B, AC100~240V input,V01

Optional Accessories

Part Number	Description
810618301010	CABLE.POWER.AC.1830mm USA type
810618301090	CABLE,POWER,AC,1830mm Europe type
810618301050	CABLE.POWER.AC.1830mm UK type
810618301170	CABLE.POWER,AC,1830mm Australia type
810618301030	CABLE.POWER.AC.1830mm Japan type