



DLO4707-L

47" TFT LCD Display, LED Backlight, 1400nits,FHD(1920x1080)

DLO4707-L 47" TFT LCD panel, built-in 1400 nits high bright for sunlight readable LCD display, high transmittance color filter, high transmission polarizing plates, Low Power Consumption, suitable for kiosk, Digital Signage, gaming, studio display, gas pump.

Key Features

- Sunlight Readable
- LED Backlight
- Full HD(1920x1080)
- Low Power Consumption
- High Uniformity
- Low EMI Noise
- Wide Dimming
- Life Expectancy
- Wide Viewing Angle



Specifications

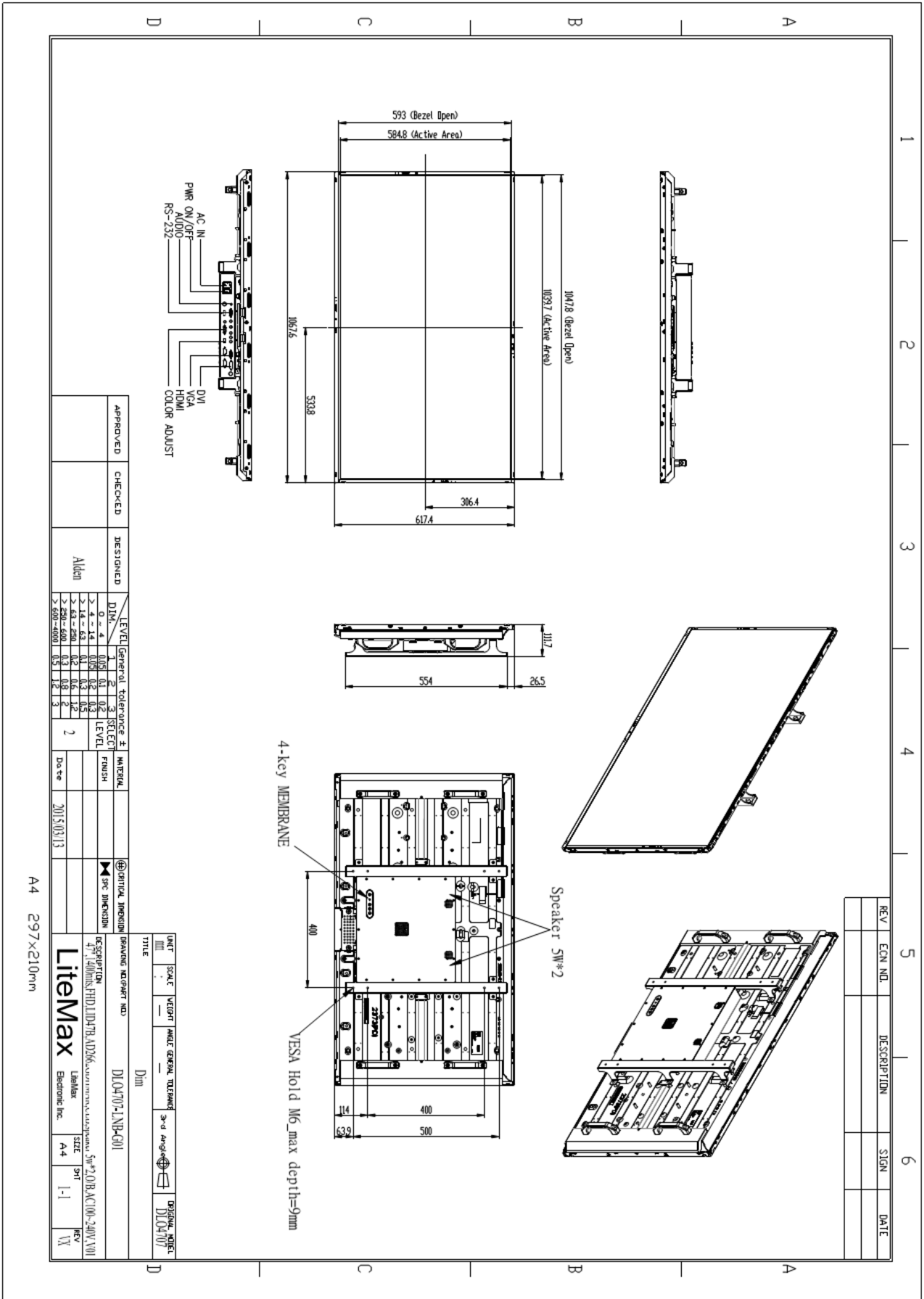
V1

Model No.	DLO4707-L
Description	47" TFT LCD Display, LED Backlight, 1400nits, FHD(1920x1080)
Display Area (mm)	1039.7(H) x 584.8(V)
Brightness	1400 cd/m ²
Resolution	1920x1080 (FHD)
Contrast Ratio	1300 : 1
Pixel Pitch (mm)	0.5415 mm x 0.5415 mm
Viewing Angle	178°(H), 178°(V)
Display Colors	16.7M
Response Time (Typical)	9 ms
Power Consumption	189W
Dimensions (mm)	1067.6(H) X 617.4(V) X 111.7 (D) mm
Weight (Net)	24.0kg
LED Driving Board	LID47B
Control Board (Optional)	AD2662GDHMVAR
<input type="checkbox"/> AD2662GDHMVAR	VGA (Optional DVI / HDMI / S-Video/ Component/AV / Audio)
F / R Control Button	<input type="checkbox"/> 4 Key
<input type="checkbox"/> 4 Key	Power Switch, Menu, Select (+,-),
OSD Menu	Brightness, Contrast, H/V Position, Color, Phase, Clock...
Optional	<input type="checkbox"/> AOT <input type="checkbox"/> Touch Screen

Specifications are subject to change without notice.

All brands or product names are trademarks or registered trademarks of their respective companies.

DLO= Panel+LED Driving Board+Control Board



A4 297x210mm



Ordering Information

Model Name	Description
DLO4707-LNB-G01	47",1400nits,FHD,LID47B.AD2662GDHMAR,CEB.speaker5w*2,O/B,AC100~240V, V01

Optional Accessories

Part Number	Description
810618301010	CABLE.POWER.AC.1830mm USA type
810618301090	CABLE,POWER,AC,1830mm Europe type
810618301050	CABLE.POWER.AC.1830mm UK type
810618301170	CABLE.POWER,AC,1830mm Australia type
810618301031	CABLE.POWER.AC.1830mm Japan type