



## SSD1033

### 9.98" Resizing LCD Display, Brightness is 700 nits, LED backlight, 800x200 ultra wide aspect ratio 16:3

SSD1033 is an innovative ultra-wide, LED backlight LCD module. It provides LCD panel with specific ratios for digital signage, public transportation, exhibition hall, department store, and vending machine applications.

#### Key Features

- Resizing LCD
- Ultra Wide Screen (16 : 3)
- LED Backlight
- High Brightness 700nits
- Low Power Consumption
- High Uniformity
- Wide Dimming



### Specifications

V1

<b>Model No.</b>	<b>SSD1033</b>
<b>Description</b>	9.98" Resizing LCD Display, 700nits, LED backlight, 800x200
<b>Display Area</b>	246.6x 61.5 mm
<b>Brightness</b>	700nits
<b>Resolution</b>	800 x 200
<b>Aspect Ratio</b>	16 : 3
<b>Contrast Ratio</b>	600:1
<b>Pixel Pitch (mm)</b>	0.3075 x 0.3075
<b>Viewing Angle</b>	160°(H), 135°(V)
<b>Display Colors</b>	262K
<b>Response Time (Typical)</b>	35 ms
<b>Power Consumption</b>	9.6W
<b>Dimensions (mm)</b>	291x106.2x46.2mm
<b>Weight (Net)</b>	1.2Kg
<b>LED Driving Board</b>	On module
<b>Control Board (Optional)</b>	<input type="checkbox"/> AD2662GVA <input type="checkbox"/> AD2662GVA + (DVI/ RS232 )
<input type="checkbox"/> AD2662GV	VGA+S-Video+AV
<input type="checkbox"/> AD2662GVA	VGA+S-Video+AV+Audio
<input type="checkbox"/> AD2662GVA + (DVI/ RS232 )	VGA+S-Video+AV+Audio (Optional DVI/ RS232)
<b>F / R Control Button</b>	<input type="checkbox"/> 4 Key
<input type="checkbox"/> 4 Key	Power Switch, Menu, Select (+,-),
<b>OSD Menu</b>	Brightness, Contrast, H/V Position, Color, Phase, Clock...
<b>Optional</b>	<input type="checkbox"/> AOT <input type="checkbox"/> Touch Screen

Specifications are subject to change without notice.

All brands or product names are trademarks or registered trademarks of their respective companies.

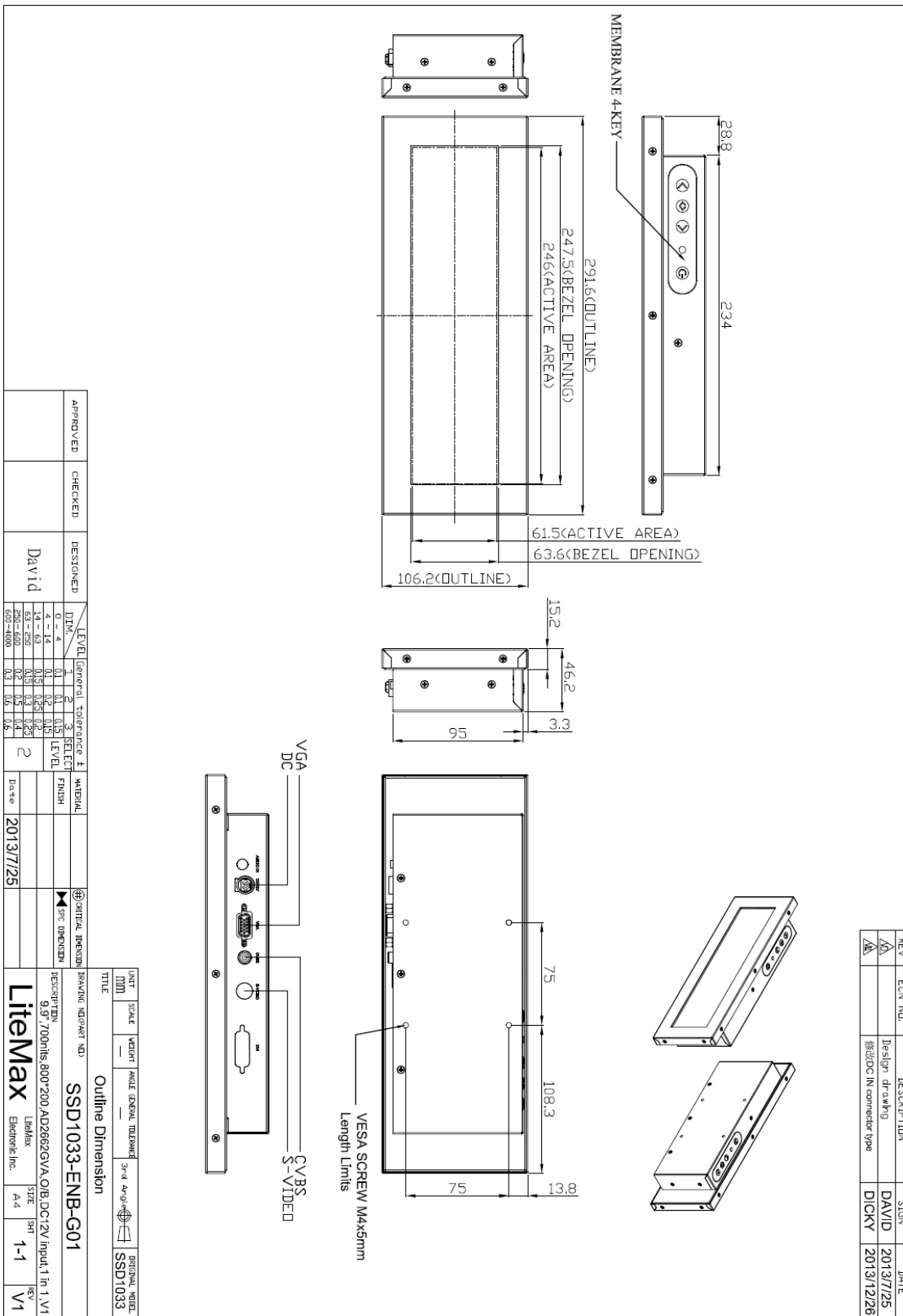
**SSD= Panel+ LED Driving Board + Control Board**



# Mechanical Drawing

## Outline Dimensions

Unit: mm





### Ordering Information

Part Number	Description
<b>SSD1033-ENB-G01</b>	9.9",700nits,800*200,AD2662GV,O/B,DC12V input,1 in 1,V1

### Optional Accessories

Part Number	Description
<b>840612031100</b>	<b>ADAPTER.12V.3.33A.40W,PAA040F,P</b>
<b>810618301010</b>	<b>CABLE.POWER.AC.1830mm USA type</b>
<b>810618301090</b>	<b>CABLE,POWER,AC,1830mm Europe type</b>
<b>810618301050</b>	<b>CABLE.POWER.AC.1830mm UK type</b>
<b>810618301170</b>	<b>CABLE.POWER,AC,1830mm Australia type</b>
<b>810618301030</b>	<b>CABLE.POWER.AC.1830mm Japan type</b>